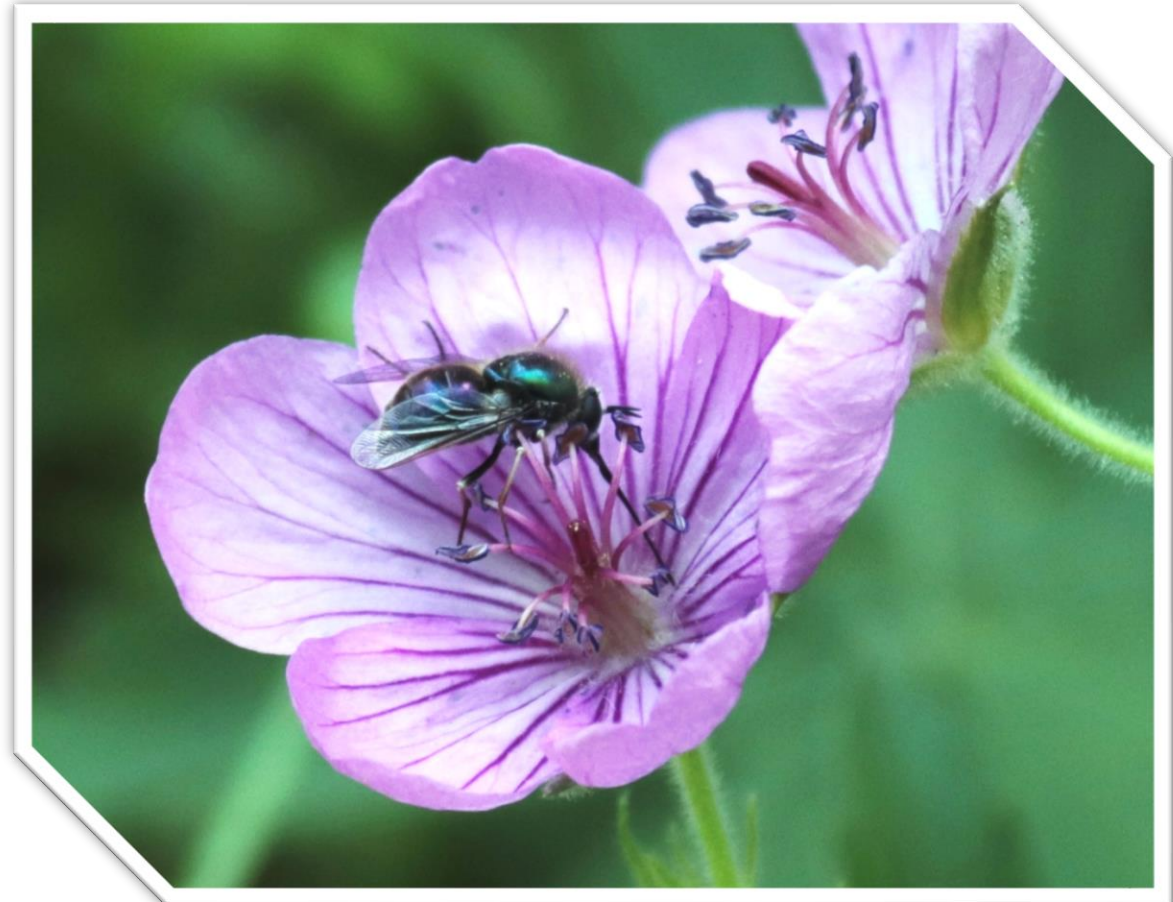


More than bees – why other insects matter

Nan Vance - Plant Physiologist



Presentation description: This visual talk is a result of retirement which has allowed me to hang out with native plants and their many associates. Armed with a camera and insatiable curiosity, I have examined not only plants of our region but some key visitors and their interesting behaviors. Through photos I would like to introduce you to some favorites all found within a radius of 100 miles: flowers and their friends: bees, wasps, flies and even a photogenic beetle that may have no redeeming qualities, except... Hope you enjoy.

Nan C. Vance, Research Plant Physiologist, USDA Forest Service retired. Formerly research lead of Biology and Culture of Forest Plants Team at PNW Research Station, Corvallis, OR; served on graduate faculty Forest Science Department and Plant Science Programs at Oregon State University. Publications covered plant physiology and ecology, pollination ecology, and restoration research in the inland northwestern US. Nan continues to study interesting and rare plants, insects and their relation to plants with the help of field photography. Because a changing climate places increasing pressure on remaining natural habitats she advocates for better understanding and support of natural habitats and processes that influence insects and their association with plants.

7:00 pm PDT, Thursday September 21, 2023

Join us in the Lecompte Auditorium, 2nd floor 1912 Center in Moscow, ID
or via ZOOM at <https://uidaho.zoom.us/j/3240288251>

Sponsored by the Idaho Native Plant Society White Pine Chapter